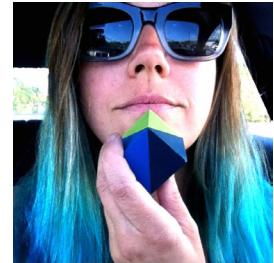
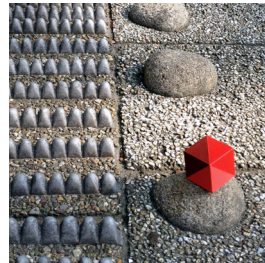


ON THE MAP SERIES



Paintings. There are four paintings (cubes) in this series, from left to right: North, East, South, West.

A Possible Interpretation. Art has a life of its own, separate from its maker. Objects and images are born at home (the studio) where they reside for a time, then ultimately travel out into the world to places the artist has never been and interact with people the artist has never met. Each piece has its own experiences, manifests intent, and incites response.

The artist Anselm Kiefer created a piece in tribute to the survivors of Treblinka. The painting is multi-media and includes metal holders containing the

ashes of burned books to represent the remains of cremated prisoners. He delivered the painting to a gallery for exhibition; the painting was installed, at some point jostled, and the ashes spilled and unceremoniously swept up and disposed of by the gallery's maintenance staff. At first, Kiefer was furious, but later realized this unintentional, thoughtless act had actually animated the painting into a perfect metaphor of its content.

Art may not be sentient, but it lives.

Never by post and always in the company of a fellow traveler, the four paintings have journeyed to Norway, Japan, Brazil, Hawaii, Peru, and Spain.

TRAVELOGUE

Date	Traveler	Destination	Guide
August 2012	East	Japan	Takeshi Kanemura
September 2012	North	Norway	David G. Meredith
December 2012	South	Brazil	Augusto Sandroni
April 2013	West	Hawaii	Jette Via
June 2015	North	Peru	Suzanne Gibbs
July 2015	East	Spain	Robin Irvine Brown
tbd	-	-	-